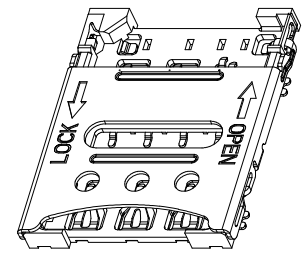
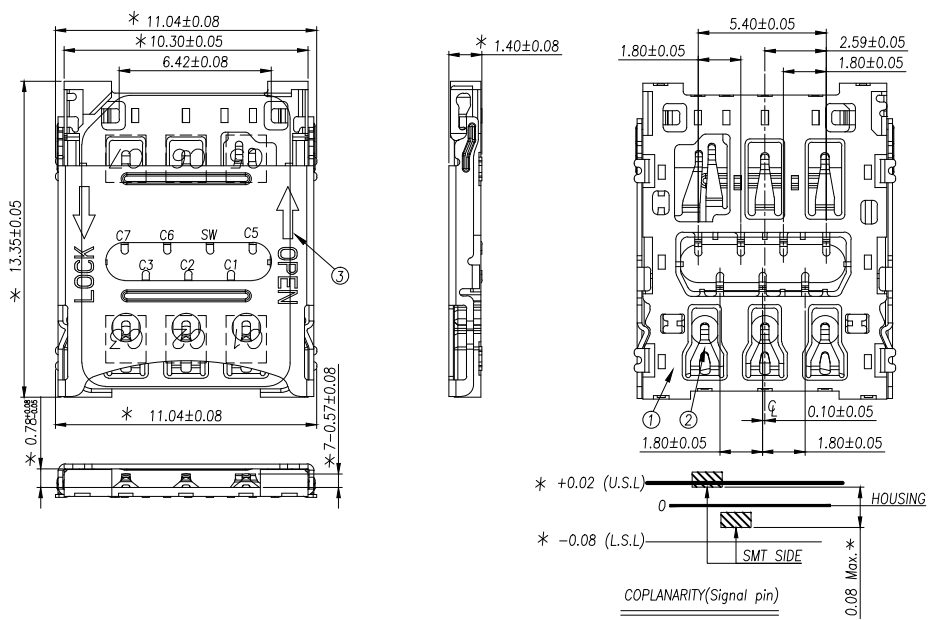
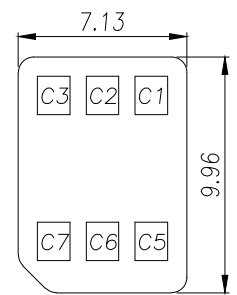
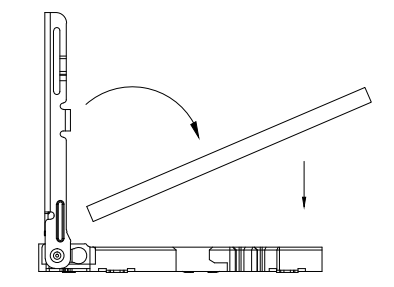


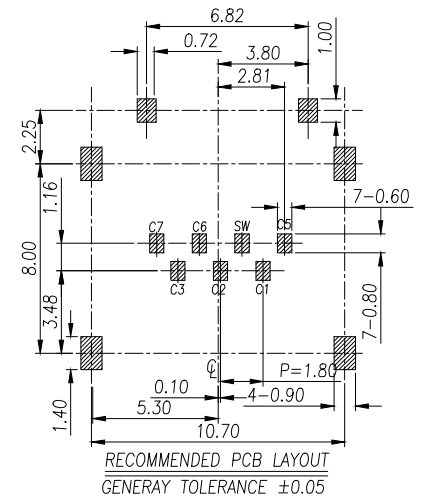
REV.	ECN.NO.	MODIFY.CONTENT	DATE
A		NEW	2015/10/31



- NOTES:
- ELECTRICAL CHARACTERISTICS
 - CONTACT RESISTANCE: 50 Milliohms Max
 - INSULATION RESISTANCE: 1,000 Megohms Min.
 - DIELECTRIC WITHSTANDING VOLTAGE: 500V AC FOR 1 MINUTE.
 - MECHANICAL CHARACTERISTICS
 - OPERATION TEMPERATURE RANGE: -25°C~+70°C
 - DURABILITY: 3000 CYCLES
 - MATERIAL:
 - HOUSING: THERMOPLASTIC,UL 94-V0
 - TERMINAL: PHOSPHOR BRONZE,T=0.10
 - SHELL: STAINLESS STEEL,T=0.15
 - FINISHED:
 - TERMINAL: Ni PLATED UNDER,Au PLATED ON CONTACT AREA,G/F PLATED ON SOLDER TAIL
 - SHELL: Ni PLATED UNDER,G/F PLATED ON SOLDER TAIL



SIM CARD	
Pin No.	NAME
C1	VCC
C2	RST
C3	CLK
C5	GND
C6	VPP
C7	I/O
SW	DETECTION SWITCH



STEP 1 INSERT Nano-SIM CARD

STEP 2 PUSH THE SHELL

STEP 3 FINISH

GENERAL TOLERANCE		DWG NO.	JYSA1014-03	APPD:	WIND	Scale	1:1
X.±0.45	x.*±5°	Title	1.35H 7PIN SIM CARD 内焊 掀盖式	CHKD:		UNIT	mm
.X±0.35	.x.*±2°			DR:			
.XX±0.25	.xx.*±1°	Part NO.	JYS-SIM135-131A	Date	2015/10/31		
.XXX±0.15	.xxx.*±0.5°						
SHEET	1/1			Shenzhen JYCONN Electronics Co., LTD.			