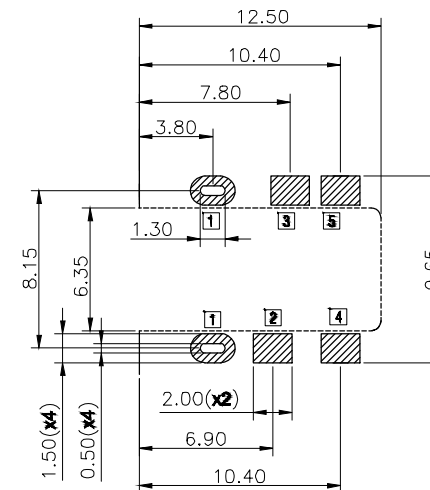
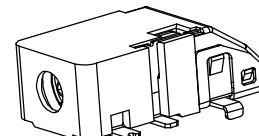
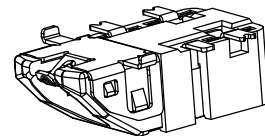
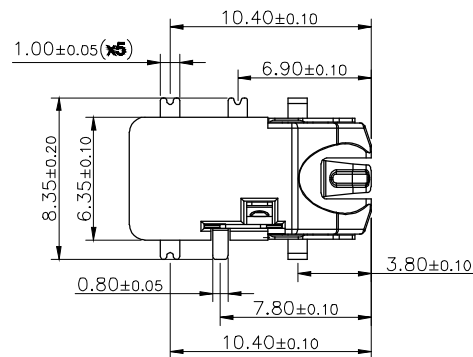
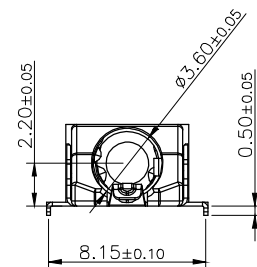
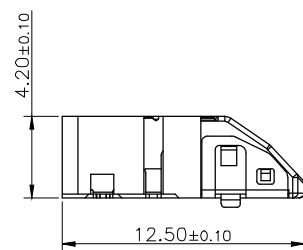


REV.	ECN.NO.	MODIFY.CONTENT	DATE
A		NEW	2014/10/31



RECOMMEND PAD LAYOUT



## NOTES :

## 1.0) RATING :

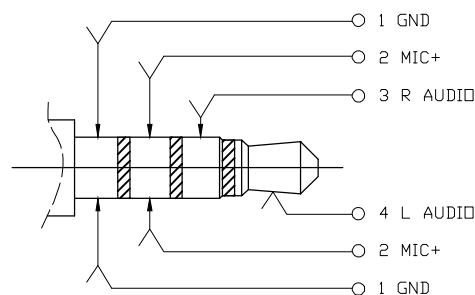
- 1.1. VOLTAGE : 12 VDC (R.M.S.)
- 1.2. CURRENT : 1 AMPERE MAXIMUM PER CONTACT AT 30° C T-RISE
- 1.3. TEMPERATURE : -25° C TO +85° C

## 2.0) ELECTRICAL CHARACTERISTIC

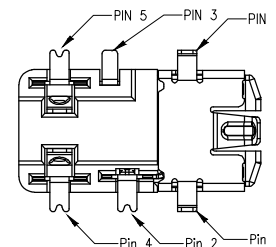
- 2.1. CONTACT RESISTANCE : INITIAL 50mΩ MAX. AFTER 100m
- 2.2. INSULATION RESISTANCE : 100 MΩ MIN.
- 2.3. DIELECTRIC WITHSTANDING VOLTAGE : 500 VAC AT SEA LEVEL

## 3.0) MECHANICAL :

- 3.1. DURABILITY , MINIMUM: MATED 5000 CYCLES WITHOUT DEGRADING ELECTRICAL
- 3.2. INITIAL-MATING FORCE: 300g~2000g. UNMATING FORCE: 300g~2000g
- 3.3. AFTER LIFE TESTING-MATING FORCE: 300g~2000g. UNMATING FORCE: 300g~2000g



MALE PLUG SCHEMATIC



GENERAL TOLERANCE		DWG NO.	JYSA0528-001	APPD:	WIND	Scale	1:1
X.±0.45	x.'±5'	Title	ø3.50 JACK 6P H=4.20 板上型 前插后贴	CHKD:		UNIT	mm
.X±0.35	.x'±2'			DR:			
.XX±0.25	.xx'±1'	Part NO.	JYS-JK420-012	Date	2014/10/31		
.XXX±0.15	.xxx'±0.5'			Shenzhen <b>JYSCONN Electronics Co., LTD.</b>			
SHEET	1/1						